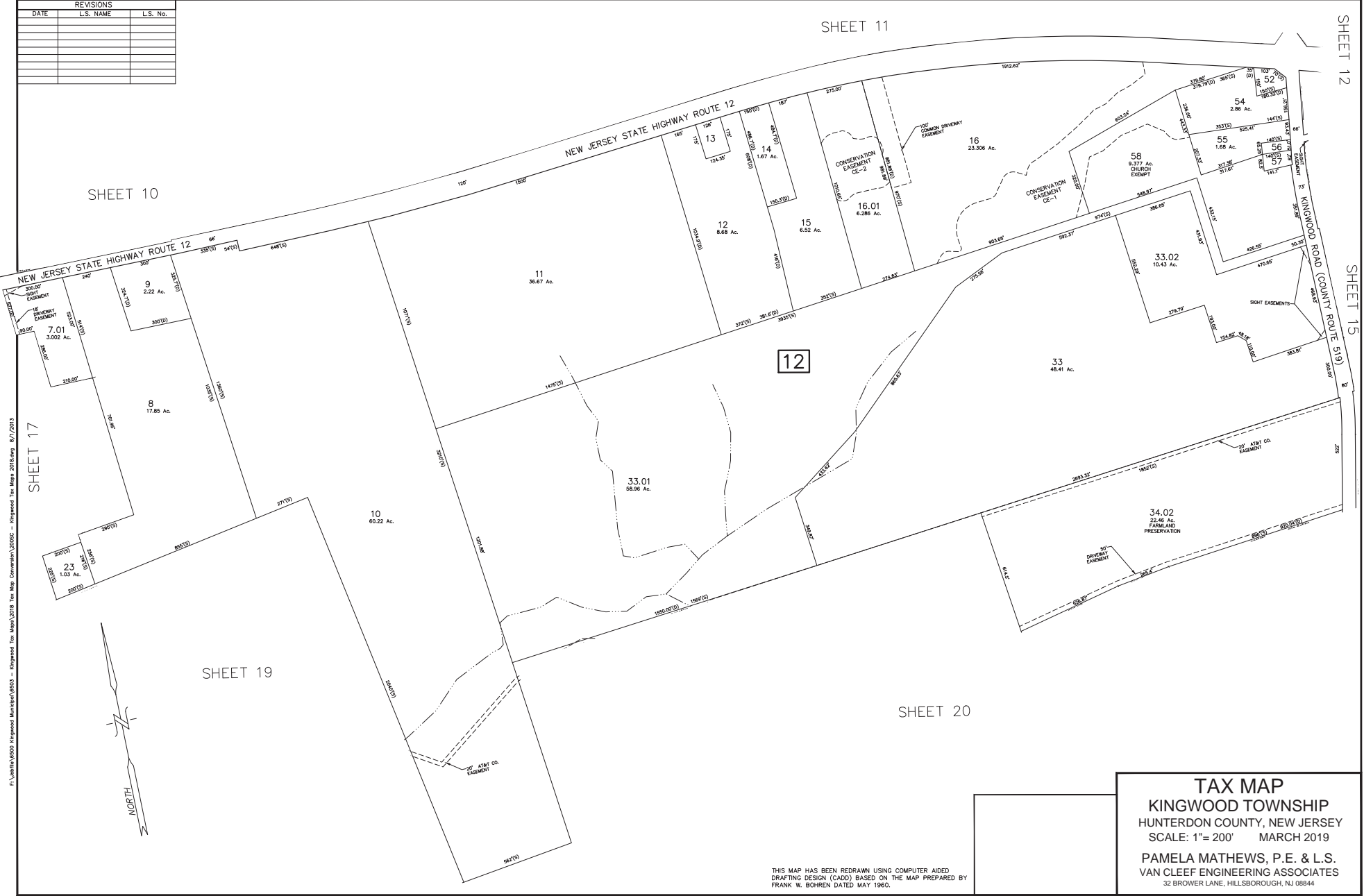


REVISIONS		
DATE	L.S. NAME	L.S. No.



**TAX MAP**  
**KINGWOOD TOWNSHIP**  
 HUNTERDON COUNTY, NEW JERSEY  
 SCALE: 1"= 200' MARCH 2019  
 PAMELA MATHEWS, P.E. & L.S.  
 VAN CLEEF ENGINEERING ASSOCIATES  
 32 BROWER LANE, HILLSBOROUGH, NJ 08844

THIS MAP HAS BEEN REDRAWN USING COMPUTER AIDED DRAFTING DESIGN (CADD) BASED ON THE MAP PREPARED BY FRANK W. BOHREN DATED MAY 1960.

C:\Users\p000\Kingwood\_Municipal\6203 - Kingwood Tax Map Convention\2019 - Kingwood Tax Map 2019.dwg - 0/7/2013