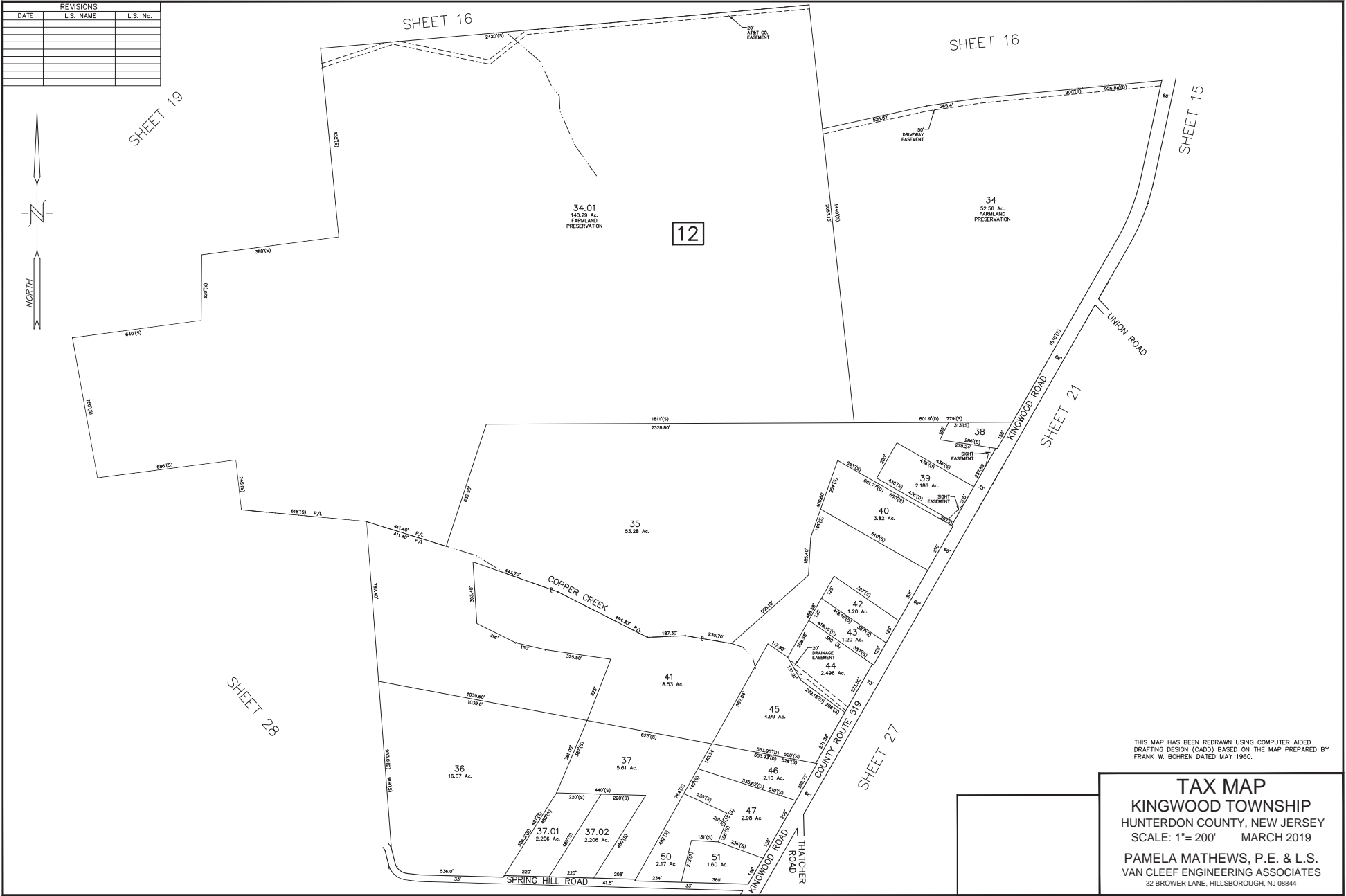


REVISIONS		
DATE	L.S. NAME	L.S. No.



THIS MAP HAS BEEN REDRAWN USING COMPUTER AIDED DRAFTING DESIGN (CADD) BASED ON THE MAP PREPARED BY FRANK W. BOHREN DATED MAY 1965.

TAX MAP
KINGWOOD TOWNSHIP
 HUNTERDON COUNTY, NEW JERSEY
 SCALE: 1"= 200' MARCH 2019
 PAMELA MATHEWS, P.E. & L.S.
 VAN CLEEF ENGINEERING ASSOCIATES
 32 BROWER LANE, HILLSBOROUGH, NJ 08844

F:\admin\MS00 Kingwood Municipal\MS03 - Kingwood Tax Map\Conventions\2020C - Kingwood Tax Map\ 2018.dwg 4/1/2019