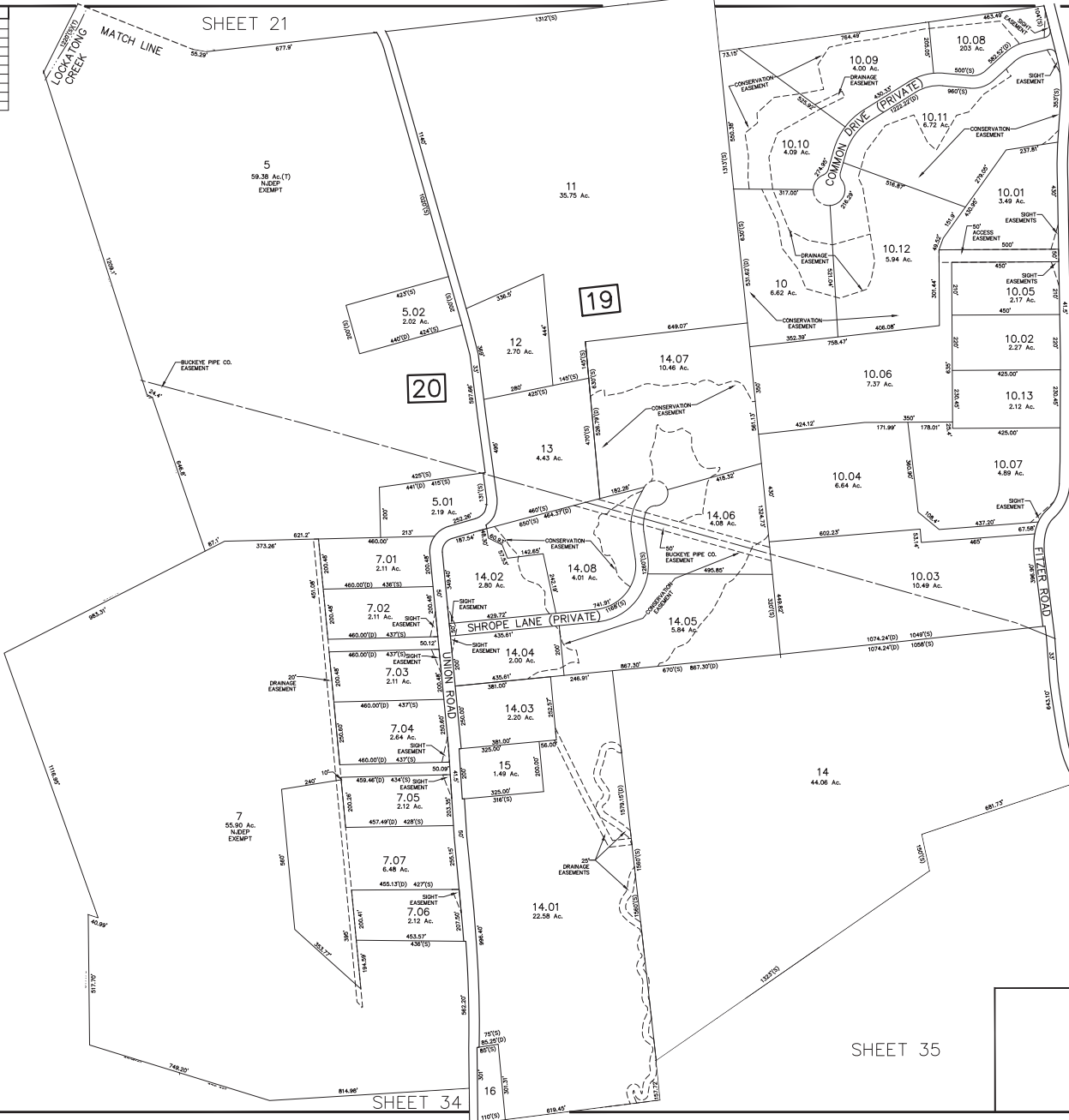


REVISIONS		
DATE	L.S. NAME	L.S. No.

SHEET 27

SHEET 32



THIS MAP HAS BEEN REDRAWN USING COMPUTER AIDED DRAFTING DESIGN (CADD) BASED ON THE MAP PREPARED BY FRANK W. BOHREN DATED MAY 1960.

**TAX MAP**  
**KINGWOOD TOWNSHIP**  
 HUNTERDON COUNTY, NEW JERSEY  
 SCALE: 1"= 200'    MARCH 2019  
 PAMELA MATHEWS, P.E. & L.S.  
 VAN CLEEF ENGINEERING ASSOCIATES  
 32 BROWER LANE, HILLSBOROUGH, NJ 08844

F:\yhdna\MS00 Kingwood Municipal\MS03 - Kingwood Tax Map\Condemnation\200202 - Kingwood Tax Map\2018.dwg 4/1/2018