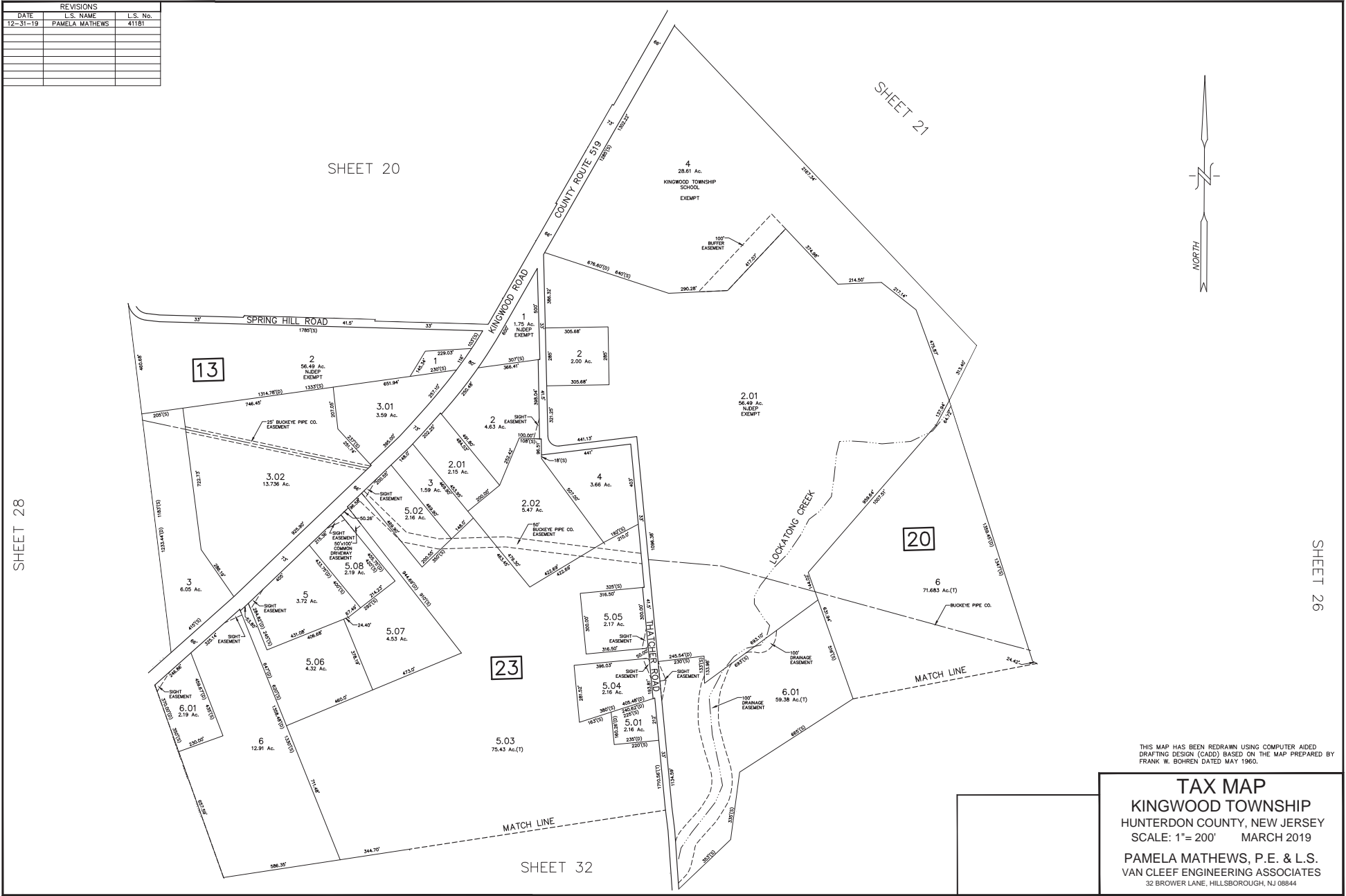


REVISIONS		
DATE	L.S. NAME	L.S. No.
12-31-19	PAMELA MATHEWS	41181



THIS MAP HAS BEEN REDRAWN USING COMPUTER AIDED DRAFTING DESIGN (CADD) BASED ON THE MAP PREPARED BY FRANK W. BOHREN DATED MAY 1960.

TAX MAP
KINGWOOD TOWNSHIP
 HUNTERDON COUNTY, NEW JERSEY
 SCALE: 1"= 200' MARCH 2019
 PAMELA MATHEWS, P.E. & L.S.
 VAN CLEEF ENGINEERING ASSOCIATES
 32 BROWER LANE, HILLSBOROUGH, NJ 08844

P:\vdhwa\MS00 Kingwood Municipal\MS03 - Kingwood Tax Map\2018 Top Map\Conventions\202002 - Kingwood Tax Map\ 2018.dwg 4/1/2020

SHEET 28

SHEET 20

SHEET 21

SHEET 26

SHEET 32