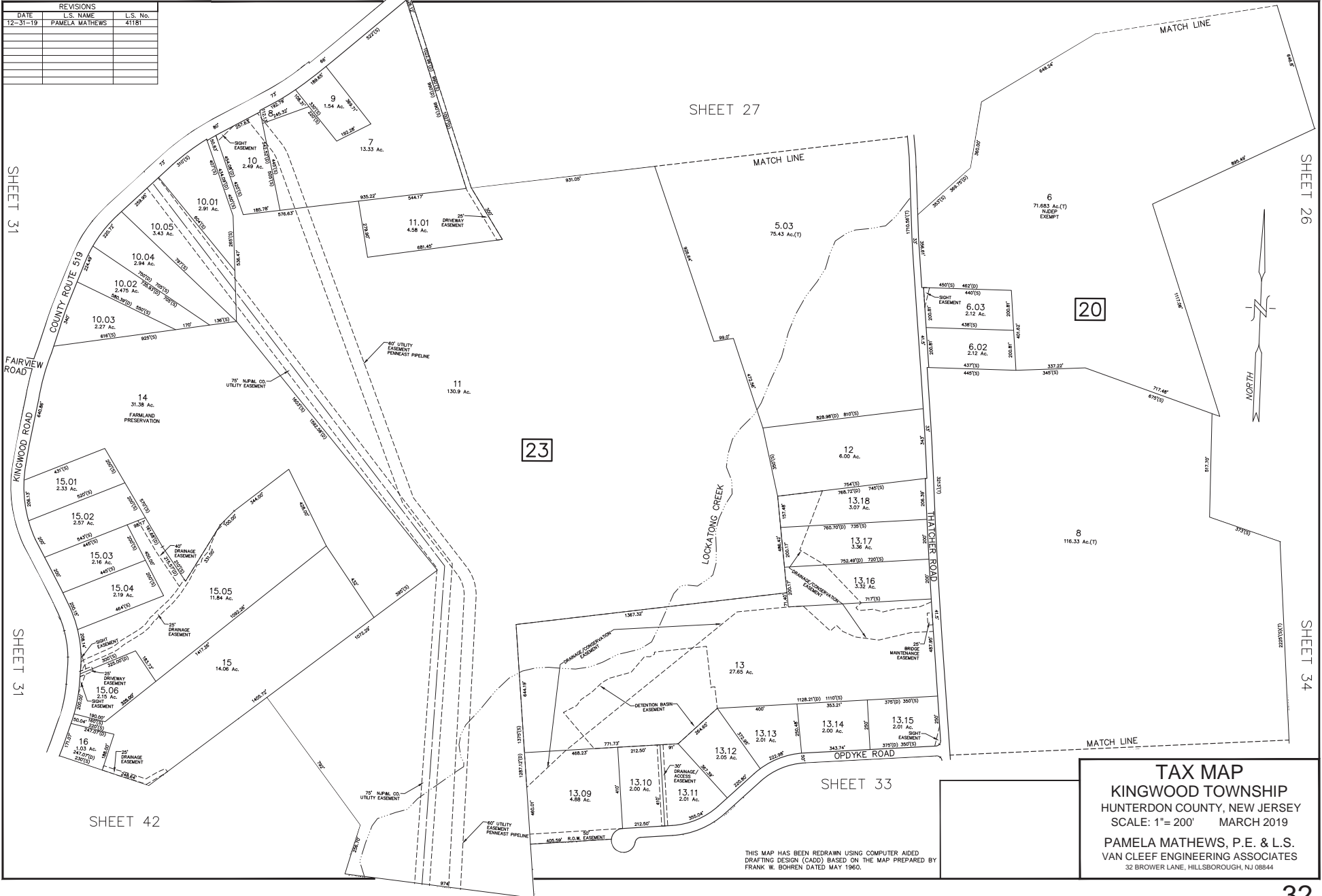


REVISIONS		
DATE	L.S. NAME	L.S. No.
12-31-19	PAMELA MATHEWS	41181



F:\vdmlm\MS00 Kingwood Municipal\MS00 - Kingwood Tax Map\2018 Tax Map\2018.dwg 8/1/2018  
 P:\vdmlm\MS00 Kingwood Municipal\MS00 - Kingwood Tax Map\2018 Tax Map\2018.dwg 8/1/2018

**TAX MAP**  
**KINGWOOD TOWNSHIP**  
 HUNTERDON COUNTY, NEW JERSEY  
 SCALE: 1"= 200' MARCH 2019  
 PAMELA MATHEWS, P.E. & L.S.  
 VAN CLEEF ENGINEERING ASSOCIATES  
 32 BROWER LANE, HILLSBOROUGH, NJ 08844

THIS MAP HAS BEEN REDRAWN USING COMPUTER AIDED  
 DRAFTING DESIGN (CADD) BASED ON THE MAP PREPARED BY  
 FRANK W. BOHREN DATED MAY 1960.