

REVISIONS		
DATE	L.S. NAME	L.S. No.

SHEET 30

MATCH LINE

DELAWARE RIVER

PINKERTON ISLAND (DETAILED ON SHEET 44)

BUCKS COUNTY, P.A.

TINICUM TOWNSHIP

NEW JERSEY STATE HIGHWAY ROUTE 29 (DANIEL BRAY HIGHWAY)

50

100 AC. NJ DEP. EXEMPT

17.01 1.91 AC.

1.01 2.014 AC.

1.02 3.254 AC.

1 3.399 AC.

2.01 96.933 AC. NJ DEP. EXEMPT

2 14.936 AC.

3.01 25.50 AC.

3.02 2.244 AC.

3.03 7.740 AC.

3.04 2.112 AC.

3.05 2.112 AC.

3.06 5.864 AC.

3.08 6.983 AC.

3.09 2.132 AC.

3.10 4.52 AC.

3.11 5.02 AC.

3.07 4.23 AC.

16 108.32 AC.

18 71.50 AC.

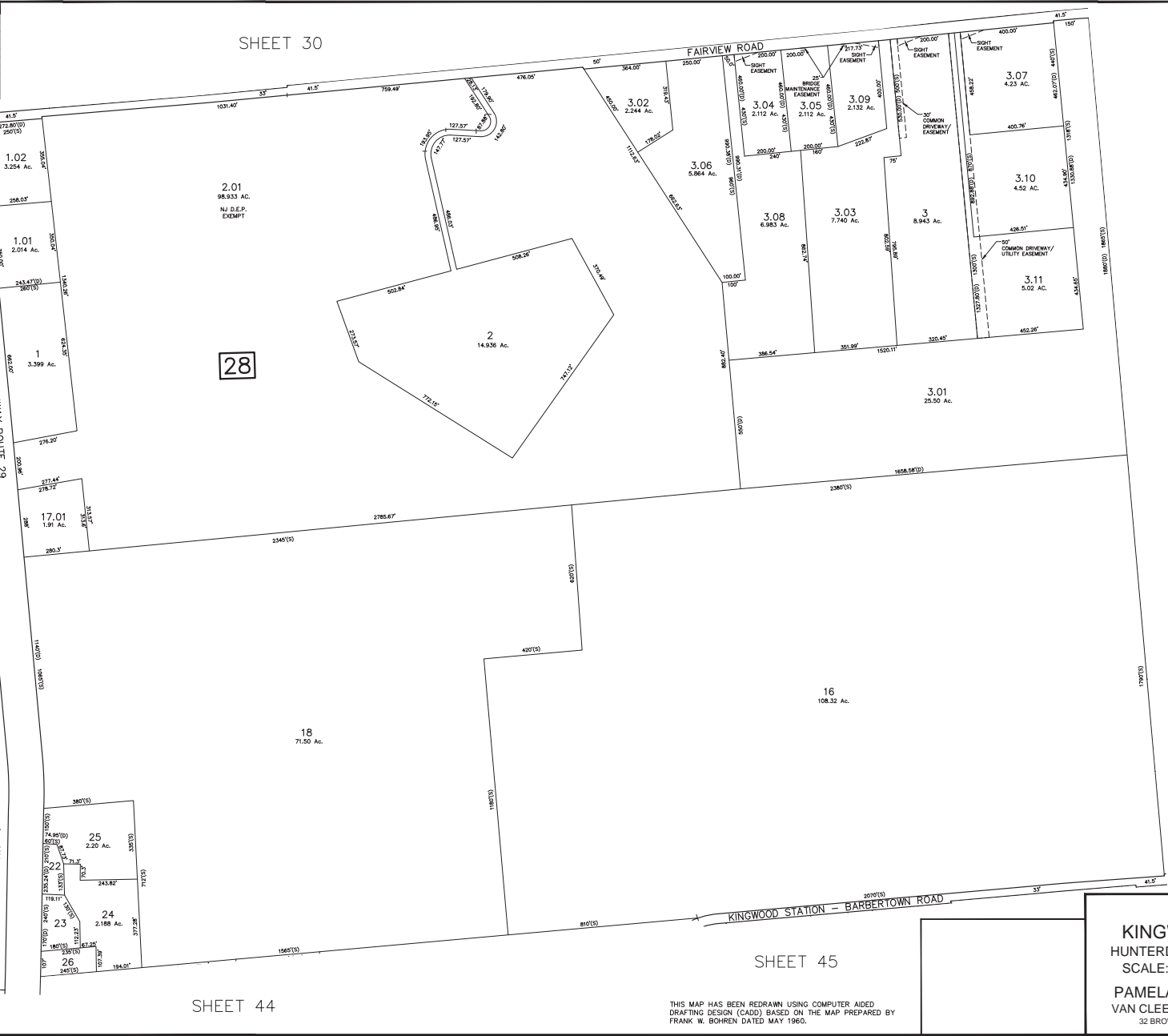
23 2.188 AC.

24 2.188 AC.

25 2.20 AC.

26 2.188 AC.

28



SHEET 42

SHEET 45

SHEET 44

**TAX MAP**  
**KINGWOOD TOWNSHIP**  
 HUNTERDON COUNTY, NEW JERSEY  
 SCALE: 1"= 200' MARCH 2019  
 PAMELA MATHEWS, P.E. & L.S.  
 VAN CLEEF ENGINEERING ASSOCIATES  
 32 BROWER LANE, HILLSBOROUGH, NJ 08844

F:\Johanna\6550 Kingwood Municipality\6550 - Proposed Tax Map Conversion\2020 - Proposed Tax Map 2018.dwg, 8/7/2013

THIS MAP HAS BEEN REDRAWN USING COMPUTER AIDED DRAFTING DESIGN (CADD) BASED ON THE MAP PREPARED BY FRANK W. BOHREN DATED MAY 1960.