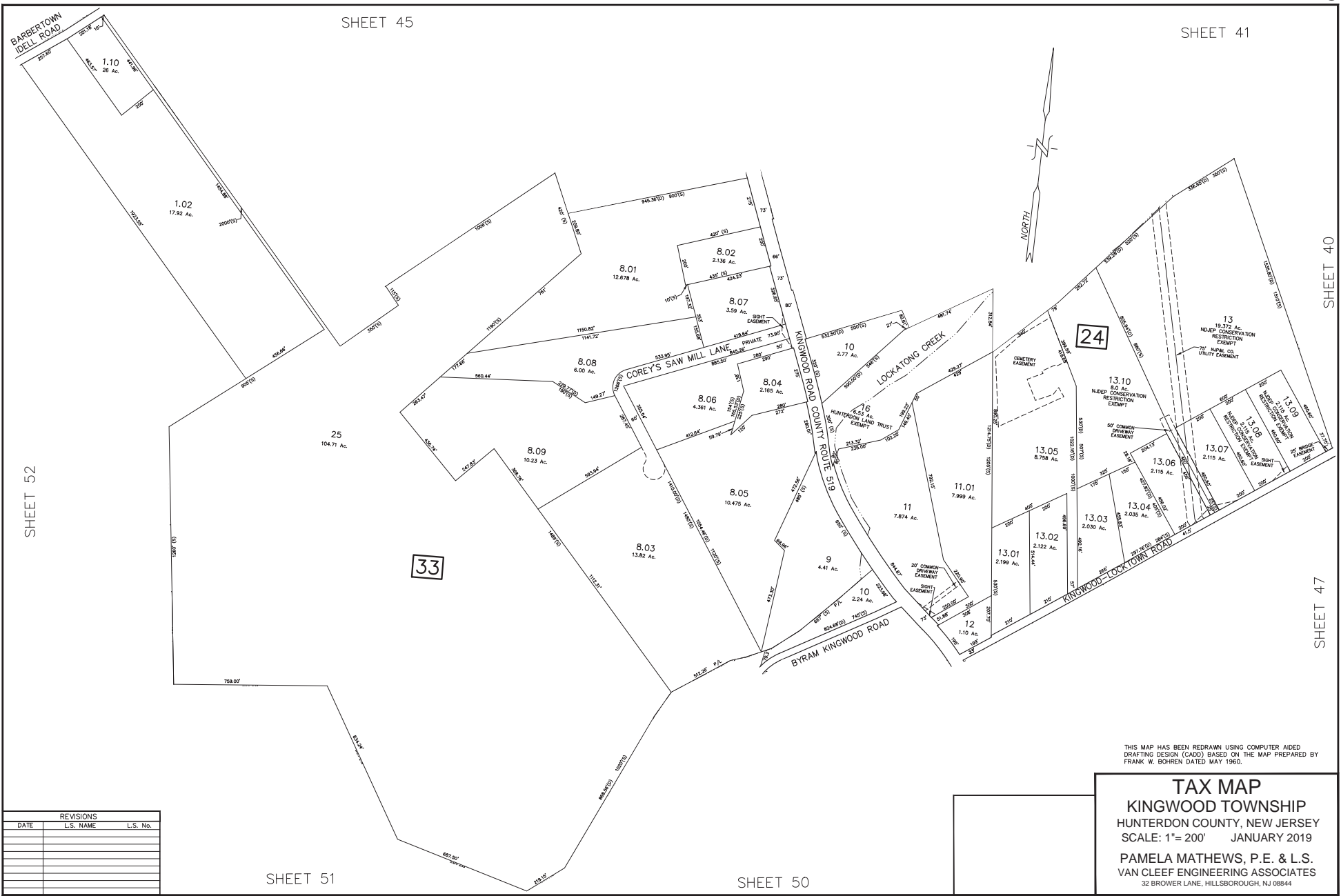


SHEET 45

SHEET 41



SHEET 52

SHEET 40

SHEET 47

SHEET 51

SHEET 50

REVISIONS		
DATE	L.S. NAME	L.S. No.

THIS MAP HAS BEEN REDRAWN USING COMPUTER AIDED DRAFTING DESIGN (CADD) BASED ON THE MAP PREPARED BY FRANK W. BOHREN DATED MAY 1960.

TAX MAP
KINGWOOD TOWNSHIP
 KINGWOOD COUNTY, NEW JERSEY
 SCALE: 1"= 200' JANUARY 2019
 PAMELA MATHEWS, P.E. & L.S.
 VAN CLEEF ENGINEERING ASSOCIATES
 32 BROWER LANE, HILLSBOROUGH, NJ 08844

F:\Admin\M500 Kingwood Municipal\M503 - Kingwood Tax Map Conversion\2020 - Kingwood Tax Map\2018.dwg 8/1/2018