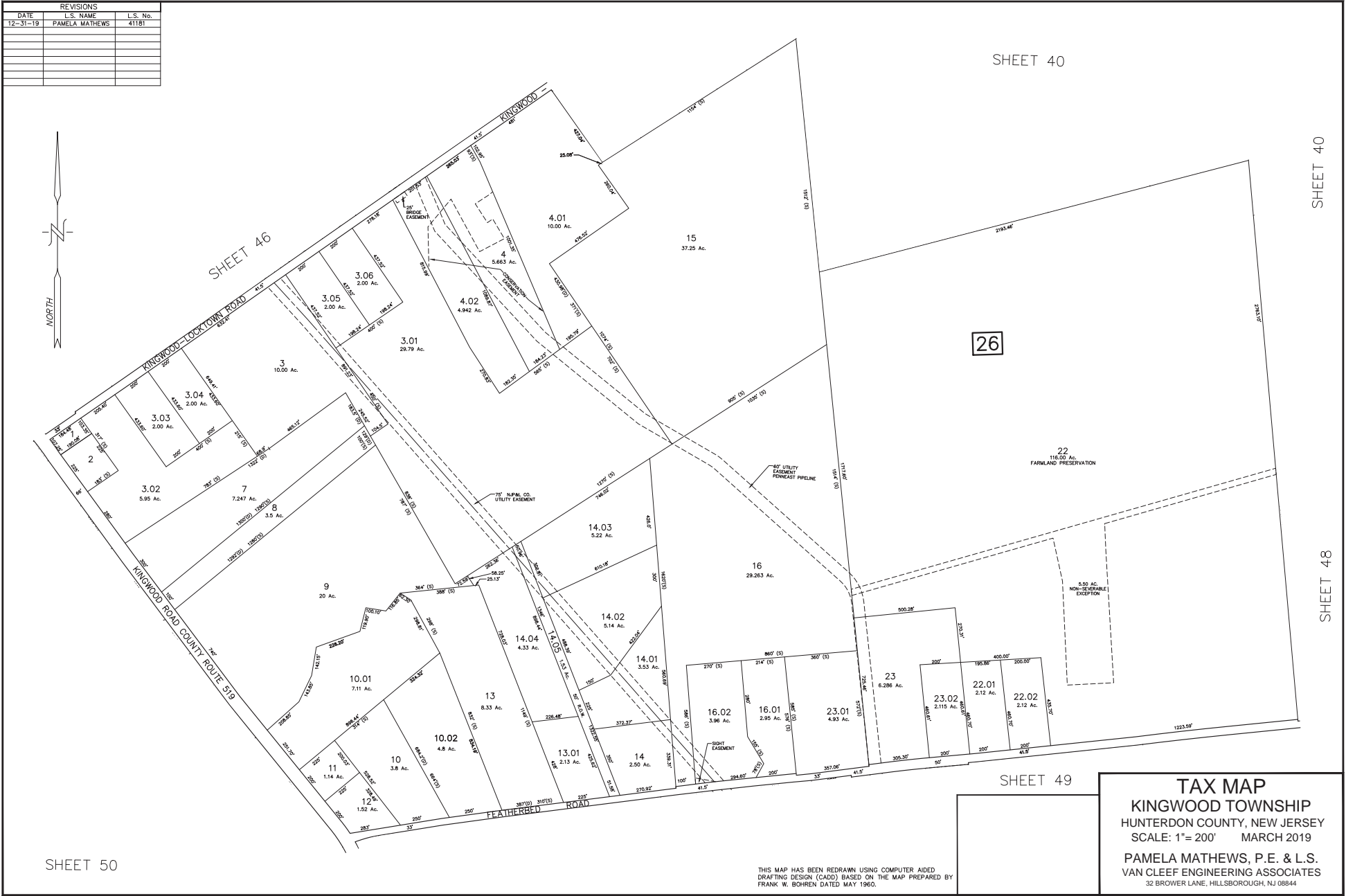


REVISIONS		
DATE	L.S. NAME	L.S. No.
12-31-19	PAMELA MATHEWS	41181



SHEET 50

SHEET 40

SHEET 40

SHEET 48

SHEET 49

TAX MAP
KINGWOOD TOWNSHIP
 HUNTERDON COUNTY, NEW JERSEY
 SCALE: 1"= 200' MARCH 2019
 PAMELA MATHEWS, P.E. & L.S.
 VAN CLEEF ENGINEERING ASSOCIATES
 32 BROWER LANE, HILLSBOROUGH, NJ 08844

THIS MAP HAS BEEN REDRAWN USING COMPUTER AIDED DRAFTING DESIGN (CADD) BASED ON THE MAP PREPARED BY FRANK W. BOHRER DATED MAY 1960.