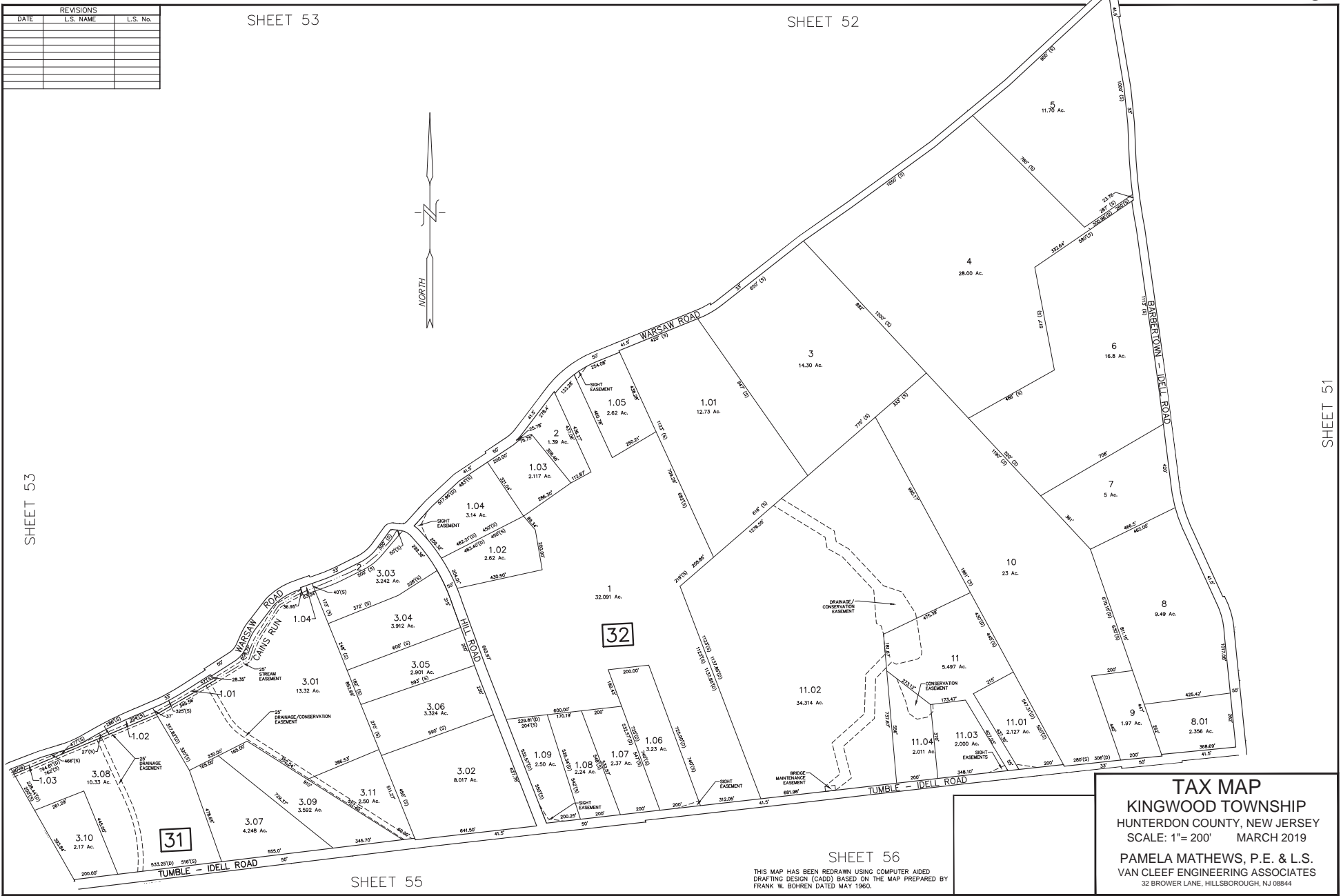


REVISIONS		
DATE	L.S. NAME	L.S. No.

SHEET 53

SHEET 52



SHEET 51

SHEET 53

SHEET 56

SHEET 55

**TAX MAP**  
**KINGWOOD TOWNSHIP**  
 HUNTERDON COUNTY, NEW JERSEY  
 SCALE: 1"=200' MARCH 2019  
 PAMELA MATHEWS, P.E. & L.S.  
 VAN CLEEF ENGINEERING ASSOCIATES  
 32 BROWER LANE, HILLSBOROUGH, NJ 08844

THIS MAP HAS BEEN REDRAWN USING COMPUTER AIDED DRAFTING DESIGN (CADD) BASED ON THE MAP PREPARED BY FRANK W. BOHREN DATED MAY 1960.

F:\admin\M500 Kingwood Municipal\M503 - Kingwood Tax Map Convention\2002C - Kingwood Tax Map 2018.dwg 4/7/2019