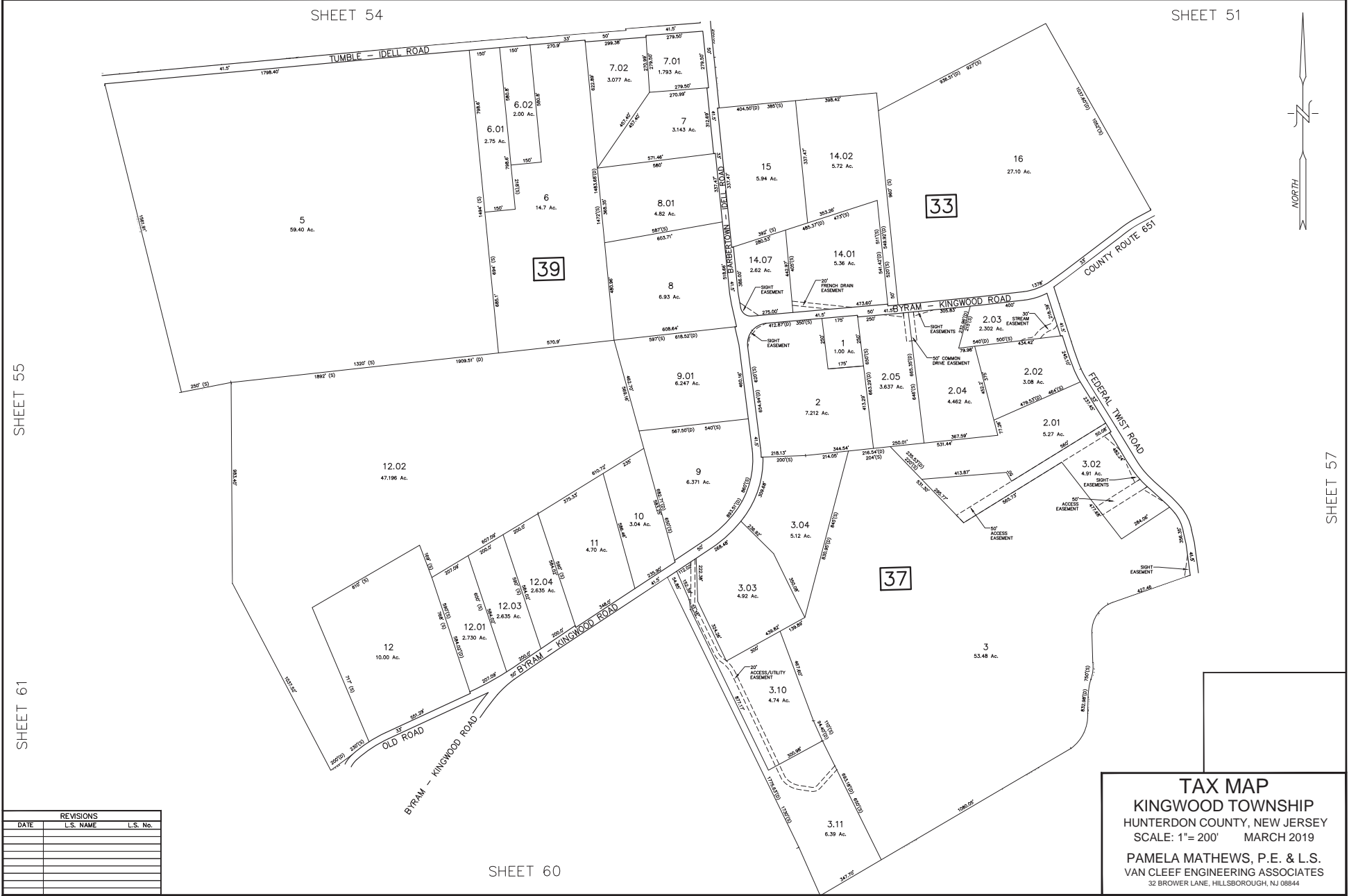
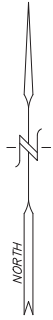


SHEET 54

SHEET 51



SHEET 55

SHEET 61

SHEET 57

REVISIONS		
DATE	L.S. NAME	L.S. No.

TAX MAP
KINGWOOD TOWNSHIP
 HUNTERDON COUNTY, NEW JERSEY
 SCALE: 1"= 200' MARCH 2019
 PAMELA MATHEWS, P.E. & L.S.
 VAN CLEEF ENGINEERING ASSOCIATES
 32 BROWER LANE, HILLSBOROUGH, NJ 08844

SHEET 60

F:\Jurnal\6500 Kingwood Municipal\6500 - Kingwood Tax Map\2019 Tax Map Conversion\2009 - Kingwood Tax Maps 2018.dwg 8/1/2013