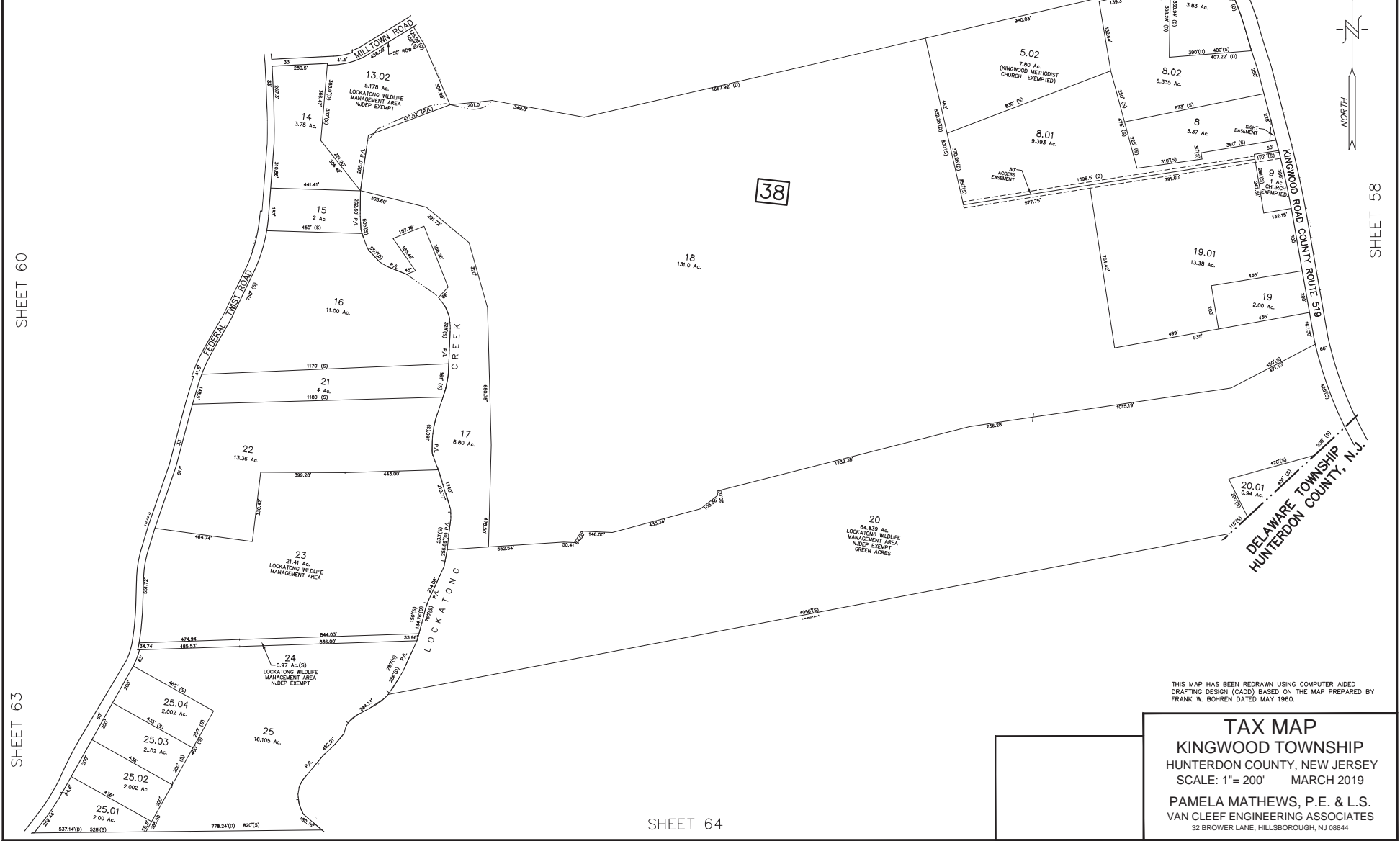


REVISIONS		
DATE	L.S. NAME	L.S. No.

SHEET 56

SHEET 57



SHEET 60

SHEET 63

SHEET 58

SHEET 64

THIS MAP HAS BEEN REDRAWN USING COMPUTER AIDED DRAFTING DESIGN (CADD) BASED ON THE MAP PREPARED BY FRANK W. BOHREN DATED MAY 1960.

TAX MAP
KINGWOOD TOWNSHIP
 HUNTERDON COUNTY, NEW JERSEY
 SCALE: 1"= 200' MARCH 2019
 PAMELA MATHEWS, P.E. & L.S.
 VAN CLEEF ENGINEERING ASSOCIATES
 32 BROWER LANE, HILLSBOROUGH, NJ 08844