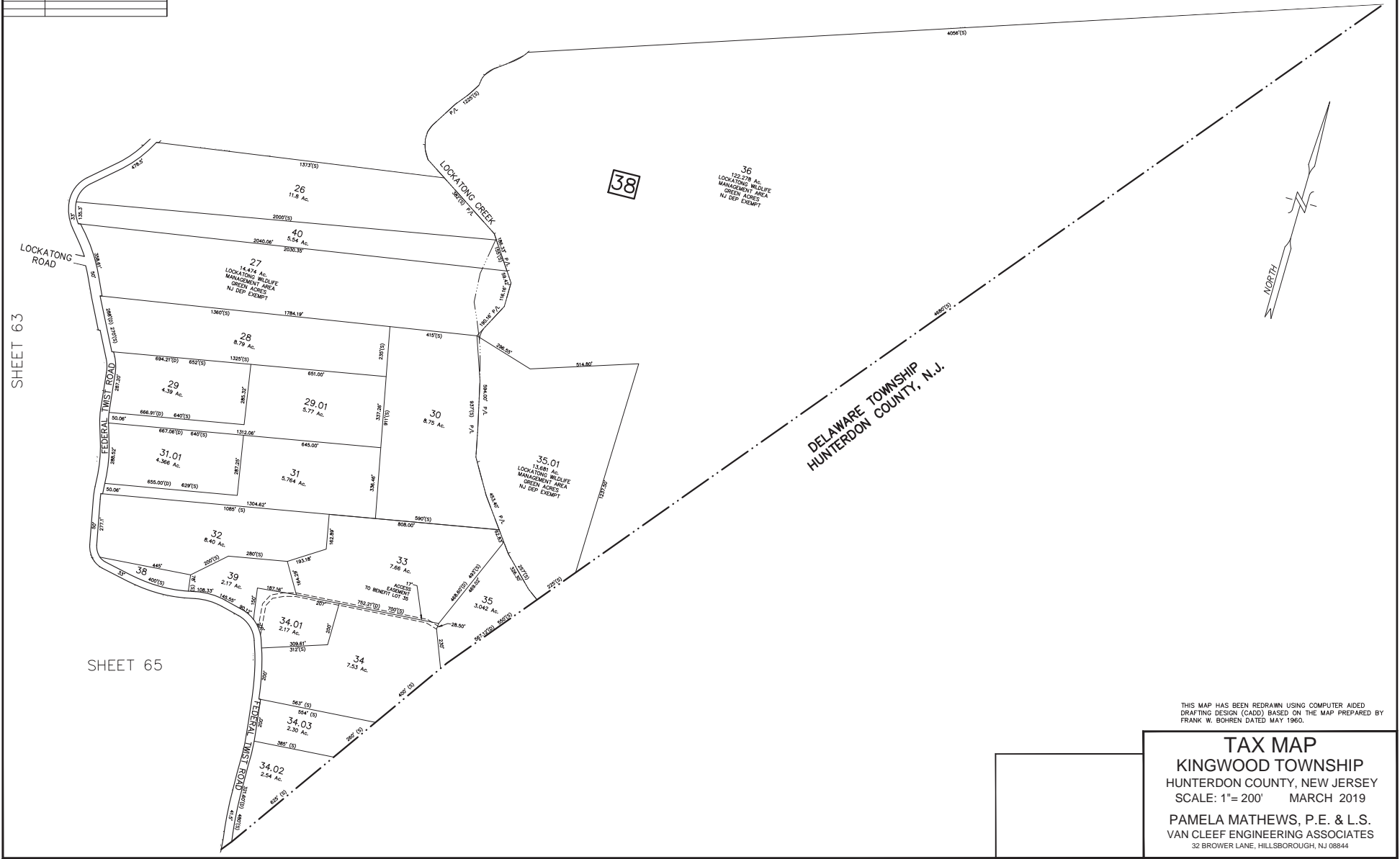


REVISIONS		
DATE	L.S. NAME	L.S. No.

SHEET 59



F:\vdhwa\MS00 Engneered Municipal\MS03 - Kingwood Tax Map\Conwntion\2020C - Kingwood Tax Map\ 01/18/2018 8/1/2013

SHEET 63

SHEET 65

DELAWARE TOWNSHIP
HUNTERDON COUNTY, N.J.

THIS MAP HAS BEEN REDRAWN USING COMPUTER AIDED DRAFTING DESIGN (CADD) BASED ON THE MAP PREPARED BY FRANK W. BOHREN DATED MAY 1960.

TAX MAP
KINGWOOD TOWNSHIP
 HUNTERDON COUNTY, NEW JERSEY
 SCALE: 1"= 200' MARCH 2019
 PAMELA MATHEWS, P.E. & L.S.
 VAN CLEEF ENGINEERING ASSOCIATES
 32 BROWER LANE, HILLSBOROUGH, NJ 08844