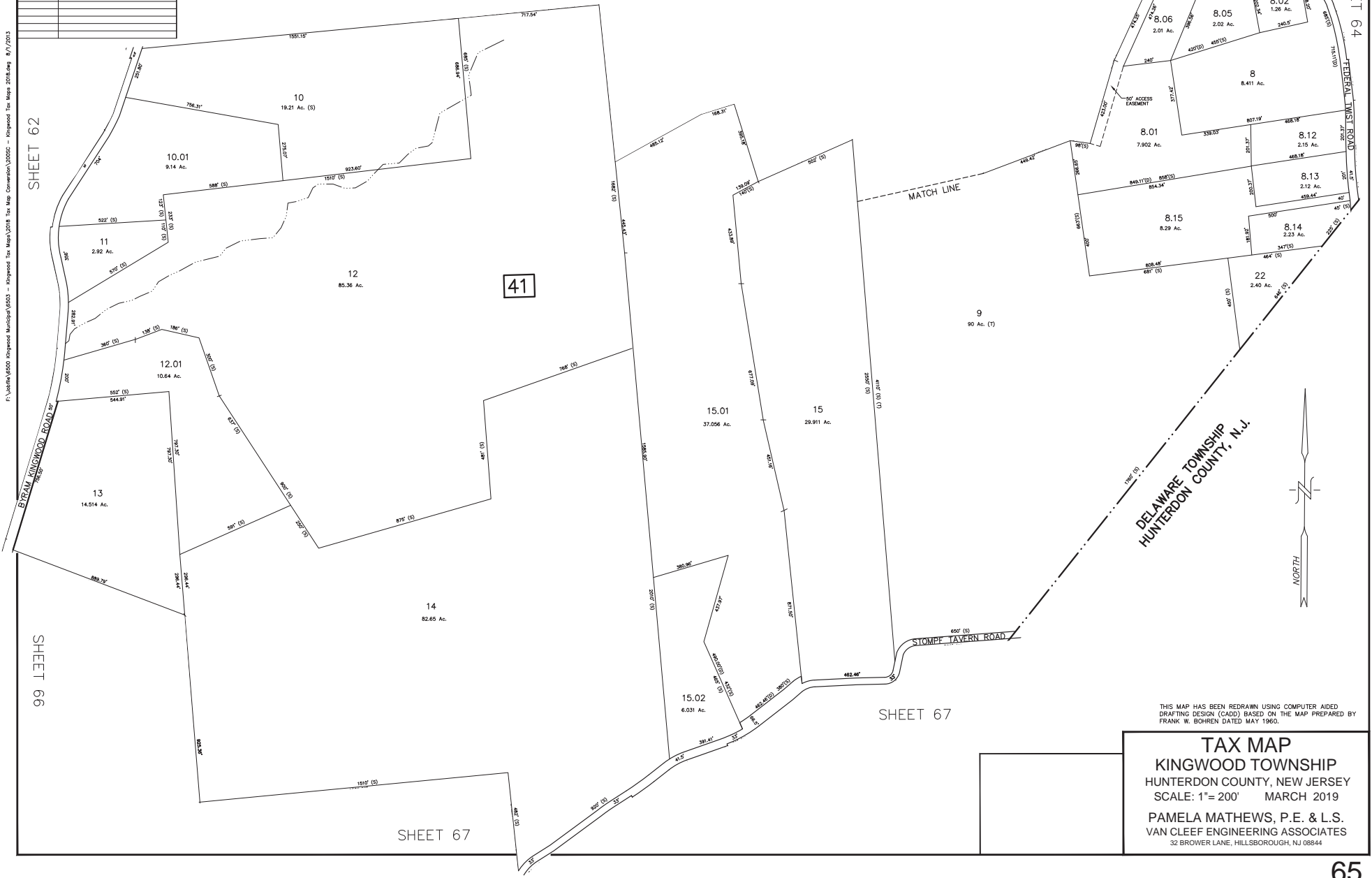


REVISIONS		
DATE	L.S. NAME	L.S. No.

SHEET 62

SHEET 63

SHEET 64



DELAWARE TOWNSHIP  
HUNTERDON COUNTY, N.J.



THIS MAP HAS BEEN REDRAWN USING COMPUTER AIDED  
DRAFTING DESIGN (CADD) BASED ON THE MAP PREPARED BY  
FRANK W. BOHREN DATED MAY 1960.

**TAX MAP**  
**KINGWOOD TOWNSHIP**  
 HUNTERDON COUNTY, NEW JERSEY  
 SCALE: 1"= 200' MARCH 2019  
 PAMELA MATHEWS, P.E. & L.S.  
 VAN CLEEF ENGINEERING ASSOCIATES  
 32 BROWER LANE, HILLSBOROUGH, NJ 08844