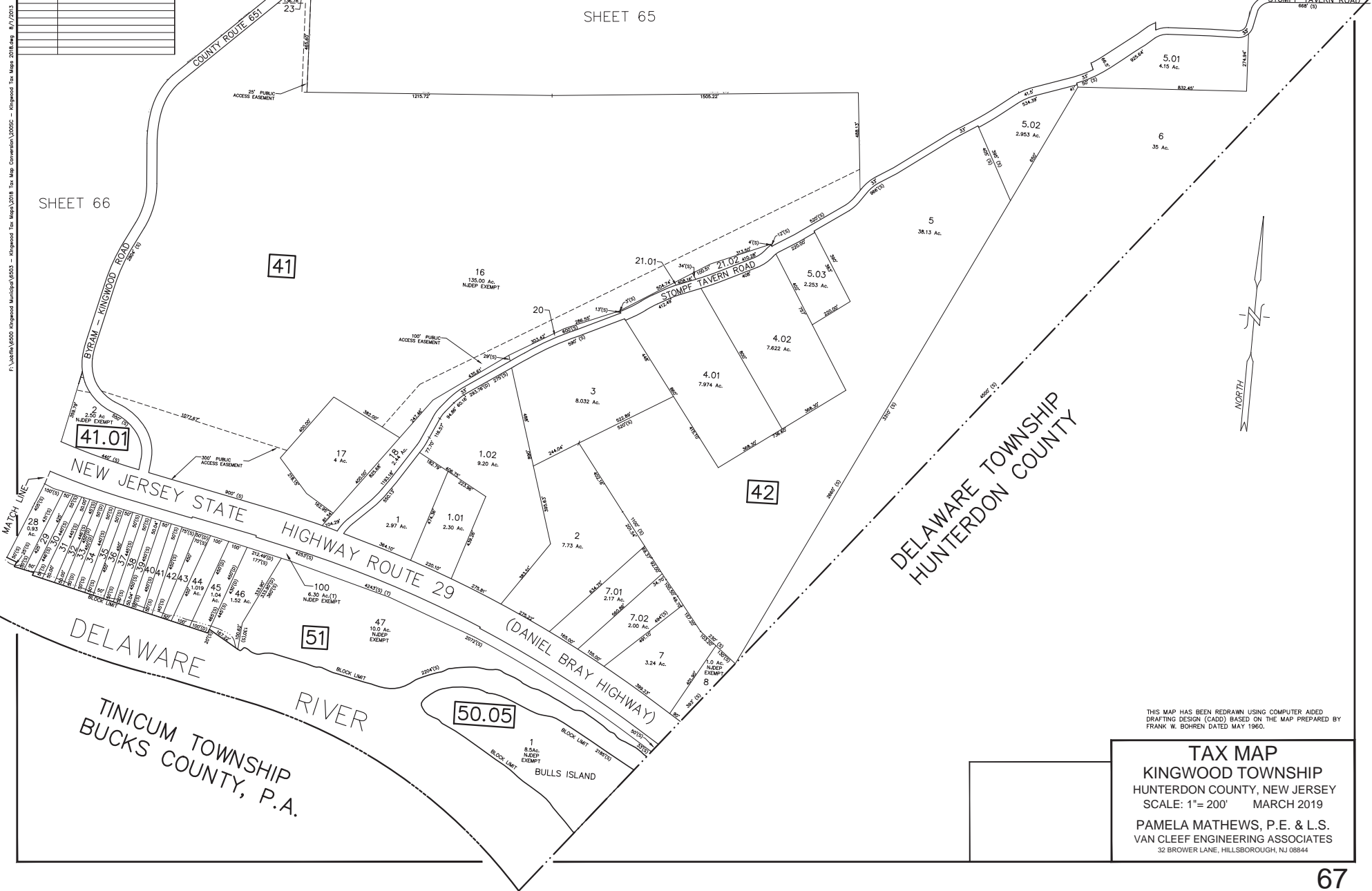


| REVISIONS | | |
|-----------|-----------|----------|
| DATE | L.S. NAME | L.S. No. |
| | | |
| | | |
| | | |
| | | |
| | | |
| | | |
| | | |
| | | |
| | | |
| | | |

SHEET 66

SHEET 65

SHEET 66



DELAWARE TOWNSHIP
HUNTERDON COUNTY

THIS MAP HAS BEEN REDRAWN USING COMPUTER AIDED DRAFTING DESIGN (CADD) BASED ON THE MAP PREPARED BY FRANK W. BOHREN DATED MAY 1960.

TAX MAP
KINGWOOD TOWNSHIP
 HUNTERDON COUNTY, NEW JERSEY
 SCALE: 1"= 200' MARCH 2019
 PAMELA MATHEWS, P.E. & L.S.
 VAN CLEEF ENGINEERING ASSOCIATES
 32 BROWER LANE, HILLSBOROUGH, NJ 08844